

**INDUSTRIAL X-RAY TUBE
I-2115A**

Toshiba X-ray Tube for Industrial Use

- ◆ The Toshiba X-ray tube I-2115A, which has mini-focus 0.15 is designed for non destructive X-ray inspection.
- ◆ This tube can be used with maximum 50 kV constant potential circuit of cathode grounded.

General Data

Electrical:

Circuit:

High Voltage Generator Constant Potential High-Voltage Generator
Grounding Cathode and X-ray port grounded
Operating Tube Voltage 10 ~ 50 kV
Nominal Focal Spot Value 0.15

Mechanical:

Dimensions:

Overall Length 96 mm
Maximum Diameter ϕ 33 mm

Target:

Angle 10 degrees
Material Tungsten
Inherent Filtration Be 0.2 mm
X-ray Coverage (Angle) Minimum 10 degrees conical field
Weight (Approx.) 220 g
Insulating Medium Insulation Oil
Cooling Method Oil immersed (60°C Max.) and convection oil cooling.
Tube Holding Holding the mounting flange with 4-M3 screws

★The information contained herein is presented only as a guide for the applications of our products.
No Responsibility is assumed by TOSHIBA ELECTRON TUBES & DEVICES CO.,LTD.(TETD) for any infringements of patents or other rights of the third parties which may result from its use. No license is granted by implication or otherwise under any patent or patent rights of TETD or others.
★The information contained herein may be changed without prior notice. It is therefore advisable to contact TETD before proceeding with the design of equipment incorporating this product.

Absolute Maximum and Minimum Ratings
(At any time, these values must not be exceeded.)

Maximum X-ray Tube Voltage	50 kV
Minimum X-ray Tube Voltage	10 kV
Maximum X-ray Tube Current	1.5 mA
Maximum Filament Current	2.1 A
Filament Frequency Limit	DC or AC (Sine Wave) 0 ~ 20 kHz
Maximum Input Energy (Continuously)	75 W
Maximum Operating Temperature (Oil Temperature)	60 °C

Environmental Limits

Operating Limits (in dielectric oil):

Oil Temperature	10 ~ 60 °C
Oil Pressure	70 ~ 140 kPa

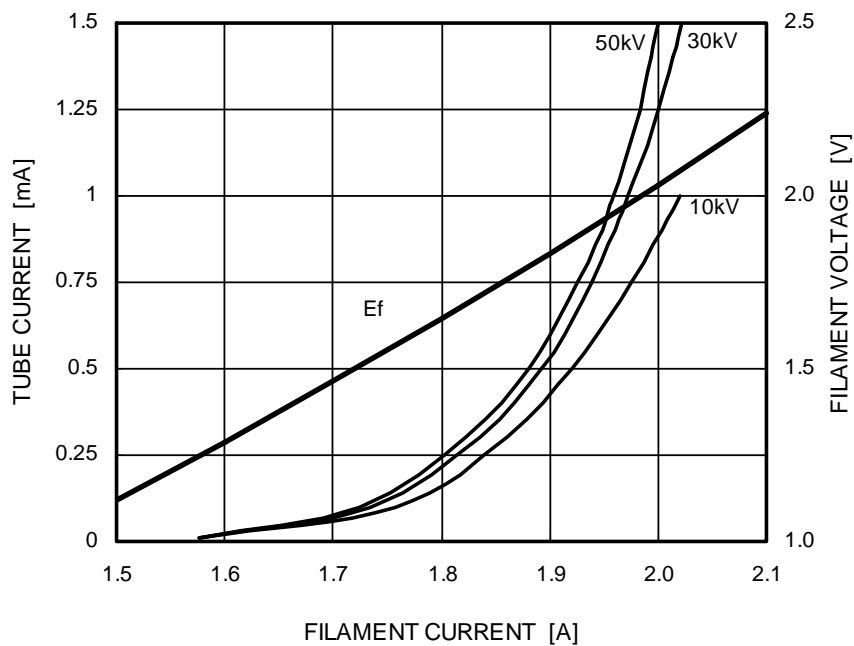
Shipping and Storage Limits:

Temperature	-40 ~ 70 °C
Humidity	10 ~ 90 % (No condensation)
Atmospheric Pressure	50 ~ 106 kPa

Emission & Filament Characteristics

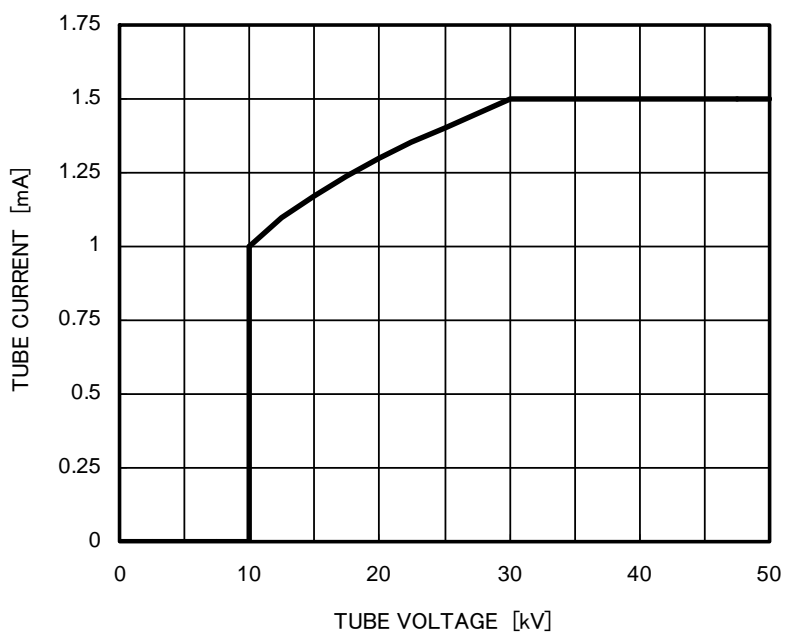
Constant Potential High-Voltage Generator

Nominal Focal Spot Value: 0.15



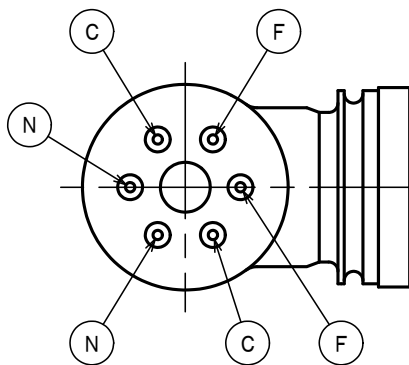
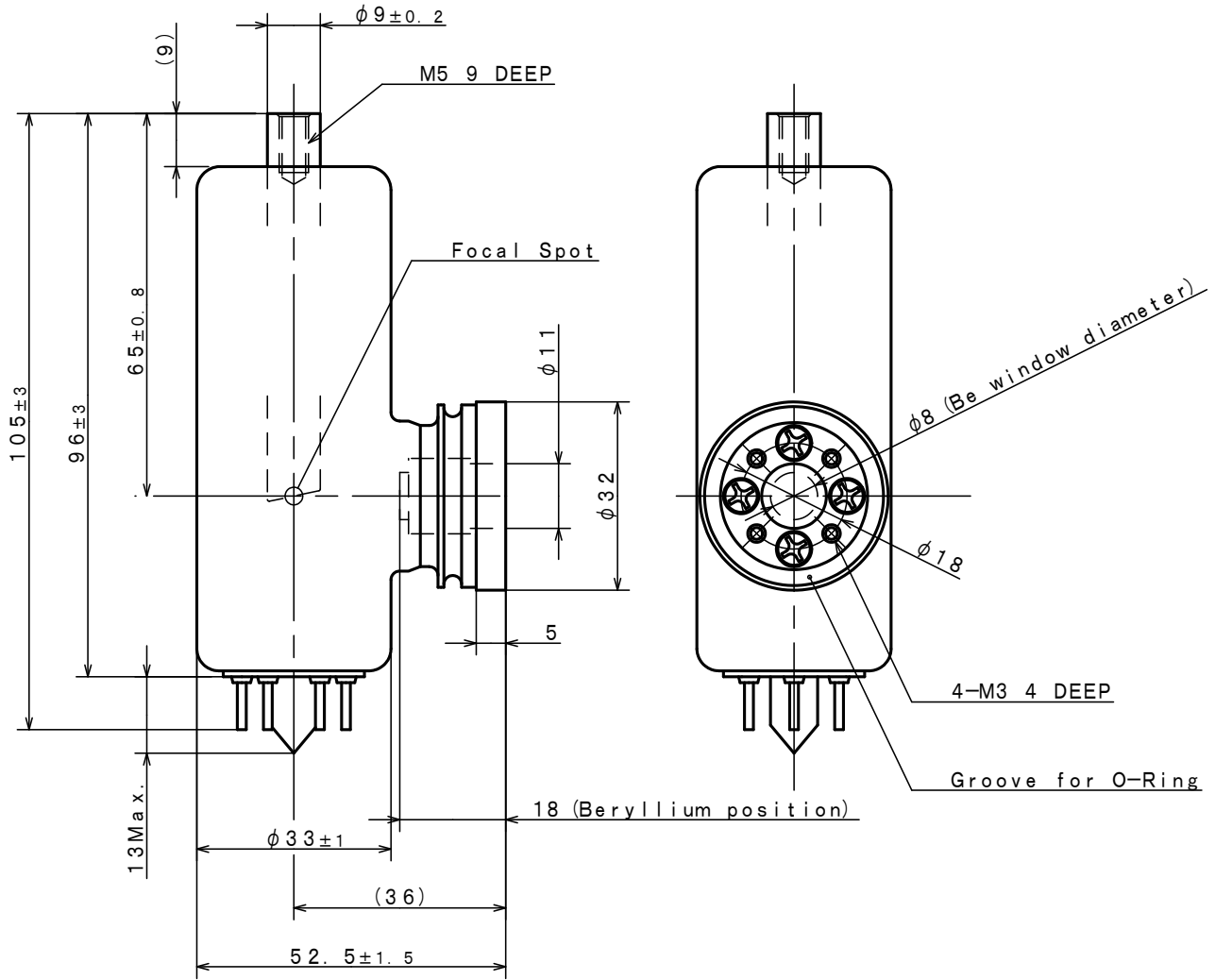
Note: This graph indicate typical characteristics.

Maximum Input (continuous)



Dimensional Outline

Unit: mm



CATHODE TERMINALS

F: FILAMENT

C: CATHODE

Terminal "C" are connected mutually inside the tube.

N: DO NOT USE

OVERSEAS SUBSIDIARIES AND AFFILIATES

EU REPRESENTATIVE

·TOSHIBA ELECTRONICS EUROPE GMBH

HANSAALLEE 181 40549 DÜSSELDORF, GERMANY

PHONE +49 (211) 5296-107 FAX +49 (211) 5296-402

For Sales & Technical Services, please contact the following representative:

·TOSHIBA ELECTRONICS EUROPE GMBH

HANSAALLEE 181 40549 DÜSSELDORF, GERMANY

PHONE +49 (211) 5296-107 FAX +49 (211) 5296-402

·TOSHIBA AMERICA ELECTRONIC COMPONENTS, INC.

2150 EAST LAKE COOK ROAD, SUITE 310

BUFFALO GROVE, ILLINOIS 60089 USA

PHONE +1 (847) 484-2400 FAX +1 (847) 541-7287

·TOSHIBA ELECTRON DEVICES & MATERIALS (SHANGHAI) CO., LTD. (TEMS)

RM1606, SH-PLAZA,

No.336, XIZANG ROAD (MIDDLE), SHANGHAI, 200001, CHINA

PHONE +86 (21) 6361-0077 FAX +86 (21) 6351-5760

TOSHIBA ELECTRON TUBES & DEVICES CO., LTD.

(Product Development Engineering Department)

1385 SHIMOISHIGAMI, OTAWARA-SHI, TOCHIGI-KEN, 324-8550, JAPAN

PHONE: +81-287-26-6666 FAX: +81-287-26-6060

<http://www.toshiba-tetd.co.jp/>

·Toshiba Electron Tubes & Devices Co., Ltd. meets the Environmental Management System Standard, ISO14001.

·Toshiba Electron Tubes & Devices Co., Ltd. meets internationally recognized Standards for Quality Management System ISO9001, ISO13485.